

# Wild & Co.

wildandco.uk

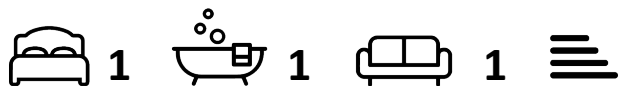


## Chelmer Road, E9 6AY

GROUND FLOOR 1 BEDROOM FLAT WITH PATIO GARDEN. Situated on this residential road close to Homerton High Street & Station, Chatsworth Road, bars, restaurants & shopping facilities. Benefiting from: fitted kitchen, bathroom/WC, gas heating, sole use of patio area. Recently redecorated with new carpets. Available now.

**£1,350 PCM |**

# Chelmer Road, E9 6AY



- One bedroom flat
- Bathroom/WC
- Furnished
- Available 17/12/21
- Ground floor
- Lounge
- Close to Homerton Station
- Fitted kitchen
- Sole use of patio
- Close to Chatsworth Road

## Description



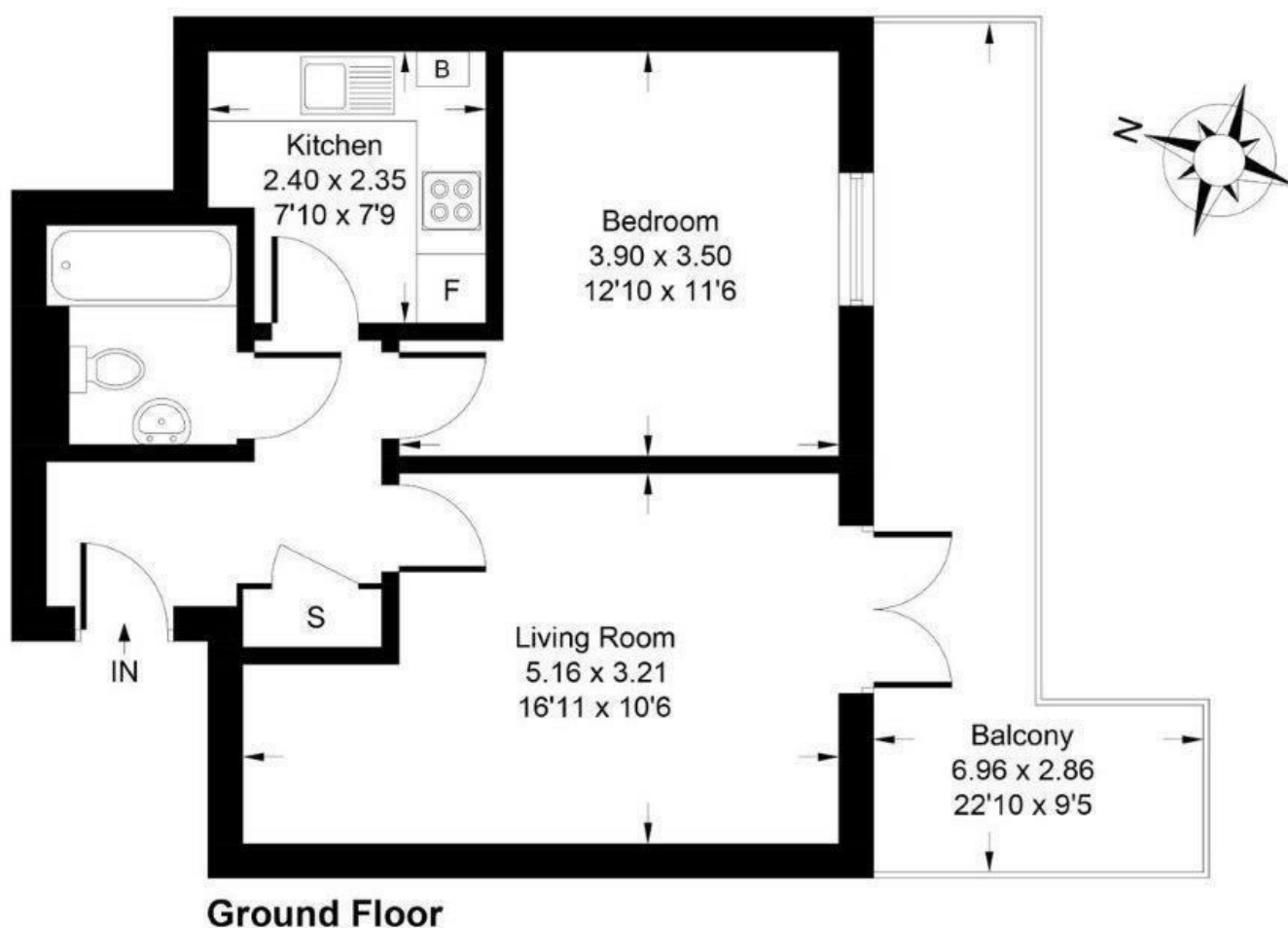
## Directions

Directly off Glyn Road, which is off Homerton High street.  
Walking distance of Homerton Overground Station.





Approximate Gross Internal Area = 41.33 sq m / 445 sq ft



Whilst every attempt has been made to ensure the accuracy of the floor plan contained here, measurements of doors, windows, rooms and any other items are approximate and no responsibility is taken for any error, omission, or mis-statement. This plan is for illustrative purposes only and should be used as such by any prospective purchase.

Energy Efficiency Rating		Current	Potential
Very energy efficient - lower running costs			
(92 plus) A			
(81-91) B			
(69-80) C			
(55-68) D			
(39-54) E			
(21-38) F			
(1-20) G			
Not energy efficient - higher running costs			
England & Wales		EU Directive 2002/91/EC	

Environmental Impact (CO <sub>2</sub> ) Rating		Current	Potential
Very environmentally friendly - lower CO <sub>2</sub> emissions			
(92 plus) A			
(81-91) B			
(69-80) C			
(55-68) D			
(39-54) E			
(21-38) F			
(1-20) G			
Not environmentally friendly - higher CO <sub>2</sub> emissions			
England & Wales		EU Directive 2002/91/EC	

These particulars, whilst believed to be accurate are set out as a general outline only for guidance and do not constitute any part of an offer or contract. Intending purchasers should not rely on them as statements of representation of fact, but must satisfy themselves by inspection or otherwise as to their accuracy. No person in this firm's employment has the authority to make or give any representation or warranty in respect of the property.